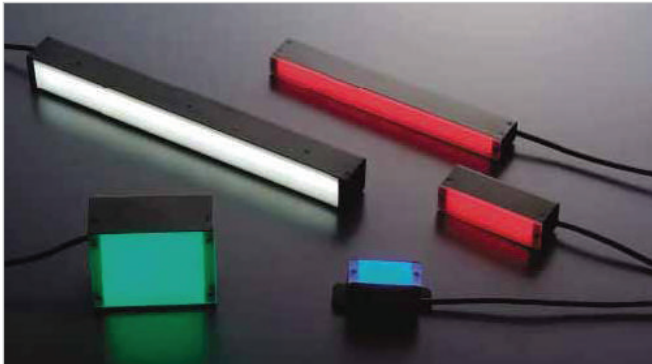


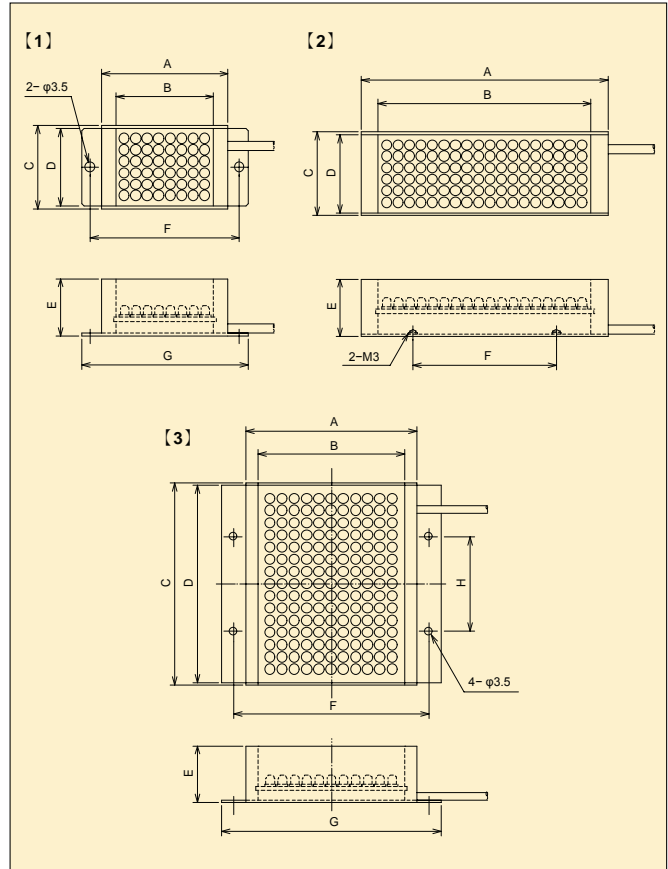
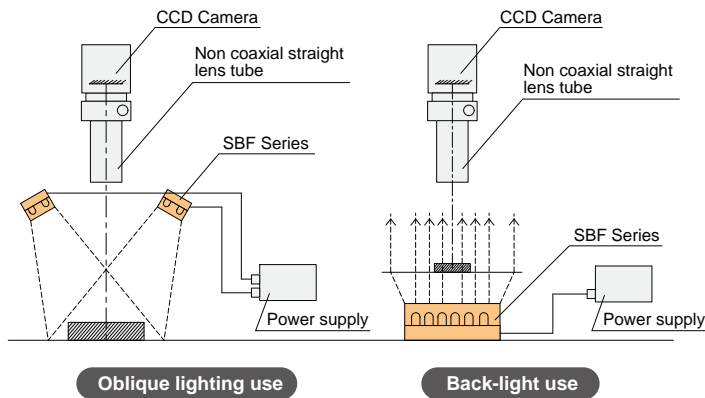
Direct Bar LED

High luminance LEDs, mounted in a flat array, for direct illumination of the subject. Can be used in combination with diffuser to provide equally intense light. A wide array of styles is offered, including those for back light and oblique use.

SBR series



[Sample Construction]



Specification

Model#	frosted filter	Dimension (mm)								LED number	Power consumption (W)	Color	Drawing
		A	B	C	D	E	F	G	H				
SBR-11-14R	No	24	14	14	11	12	30	36	-	6	0.3	Red	[1]
SBR-15-26RS	Yes	36	26	18	15	20.5	44	50	-	18	0.8	Red	
SBR-15-26WS		36	26	18	15	20.5	44	50	-	18	1.5	White	
SBR-27-34R	No	44	34	30	27	20.5	52	58	-	48	2.0	Red	
SBR-27-34W		44	34	30	27	20.5	52	58	-	48	3.9	White	[3]
SBR-70-75RS		85	75	71	68	30.5	95	105	60	168	6.8	Red	
SBR-70-75WS	Yes	85	75	71	68	30.5	95	105	60	168	13.5	White	
SBR-25-25RS		35	25	28	25	30.5	15	-	-	36	1.5	Red	
SBR-25-25WS		35	25	28	25	30.5	15	-	-	36	2.9	White	[2]
SBR-50-15R		60	50	18	15	20.5	30	-	-	36	1.5	Red	
SBR-50-15W		60	50	18	15	20.5	30	-	-	36	2.9	White	
SBR-100-11R		110	100	14.2	11.2	20.7	80	-	-	48	2.0	Red	
SBR-100-11W		110	100	14.2	11.2	20.7	80	-	-	48	3.9	White	
SBR-140-11W		150	140	14	11	20.5	80	-	-	70	2.9	White	[2]
SBR-140-11R	No	150	140	14	11	20.5	80	-	-	70	5.8	Red	
SBR-132-15R		142	132	18	15	20.5	80	-	-	96	3.9	Red	
SBR-132-15W		142	132	18	15	20.5	80	-	-	96	7.7	White	
SBR-72-24R		86	74	30	27	20.5	50	-	-	108	4.4	Red	[2]
SBR-72-24W		86	74	30	27	20.5	50	-	-	70	5.8	White	
SBR-50-50RS		62	50	51	48	30.5	Note1	-	-	144	5.8	Red	
SBR-50-50WS		62	50	51	48	30.5	Note1	-	-	90	7.2	White	
SBR-15-200RS		210	200	24	15	22.5	100	-	-	147	6.0	Red	[2]
SBR-15-200WS	Yes	210	200	24	15	22.5	100	-	-	147	11.8	White	
SBR-185-30RS		198	186	39	30	22.5	Note2	-	-	216	8.7	Red	
SBR-185-30WS		198	186	39	30	22.5	Note2	-	-	216	17.3	White	
SBR-300-24RS		300	288	36	27	22.5	160	-	-	426	17.1	Red	[2]
SBR-300-24WS		300	288	36	27	22.5	160	-	-	426	34.1	White	

Note : Blue (B) , Green (G) LED are also available.

[List of frosted filter for Direct Bar illuminators]

The frosted filter listed below is for Direct Bar illuminators that do not have a frosted filter as an option.
(thickness : 2mm / transmission : 80%)

■ Frosted filters for Direct Bar LED

Filter Model#	LED Model#
SKBR-11-14	SBR-11-14
SKBR-50-15	SBR-50-15
SKBR-27-34	SBR-27-34
SKBR-100-11	SBR-100-11
SKBR-140-11	SBR-140-11
SKBR-132-15	SBR-132-15
SKBR-72-24	SBR-72-24

* 1
Dimension of E will be changed to 21 when installed frosted filter.

Note 1 : 4-M3 pitch 40X40
Note 2 : 3-M3 pitch 70